

vaporous

VAPOROUS.COM

ABOUT VAPOROUS

MISSION

“Listening to the market and the needs of customers who want clean, safe, reliable and scalable technology with the highest performance, quality and enjoyment in the Vaping Industry.”

PHILOSOPHY

At Vaporous we set the new standard, creating the most consistent product in a famously inconsistent industry. It is at the heart of every device we produce. We strive to provide the enthusiast and our clients with the best experience every time.

ENGINEERING

At Vaporous, our team of engineers utilize in house, state of the art technology to rapidly prototype and brand the latest hardware for our customers. We would love to work together with your business and create a product that customers trust, and stands alone as the most innovative vaporizer on the market. Additionally, we work with our clients throughout every step of the design process, with industry leading expertise in engineering and design customization including form factor and aesthetics as well as functionality and airflow.

CLEAN

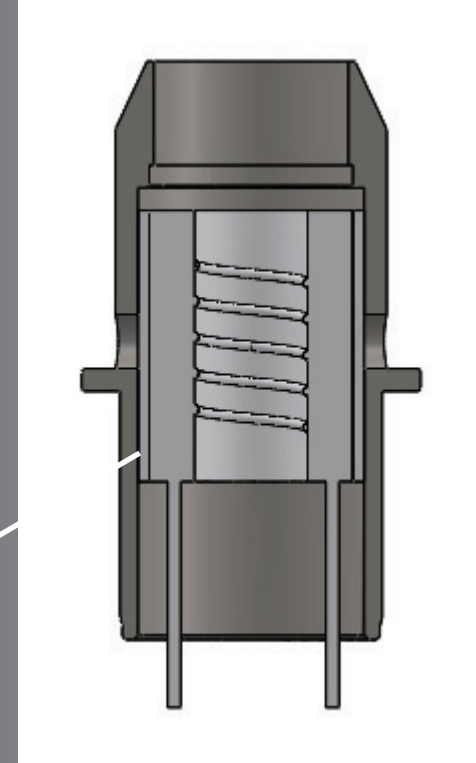
Unlike our competitors, Vaporous believes in creating products that are responsibly sourced and crafted using the highest quality materials, never using toxic products nor chemicals. With our stainless steel tank internals and certified lead-free materials you can rest assured that Vaporous will provide you a cleaner cart like no other.



COOL DRAW TECHNOLOGY

- Cool Draw Technology was developed by Vaporous to reduce vapor temperature, improve taste & increase airflow to provide the best experience for the customer
- Utilizing a larger outer diameter and increased inner diameter creates a larger surface area to lower the amount of temperature needed to produce vapor
- Increased inner diameter of the heating element will provide the user an easier more effortless draw through the cartridge
- Japanese organic cotton is used to minimize the change in taste

Larger inner diameter than our competitors which creates an easier and smoother draw. This combined with a larger outer diameter creates a larger surface area to heat the product. Less heat equals a more flavorful experience for the customer.

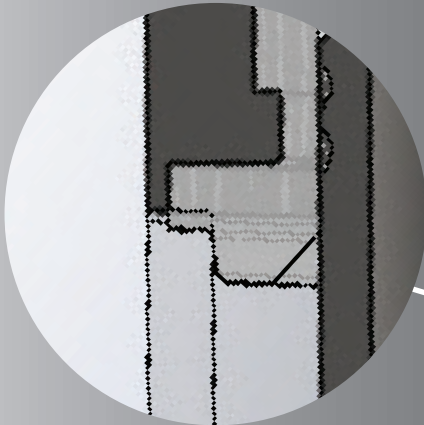


TOTAL MOUTHPIECE SEAL

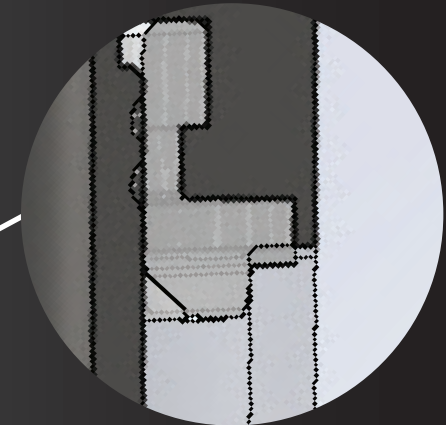
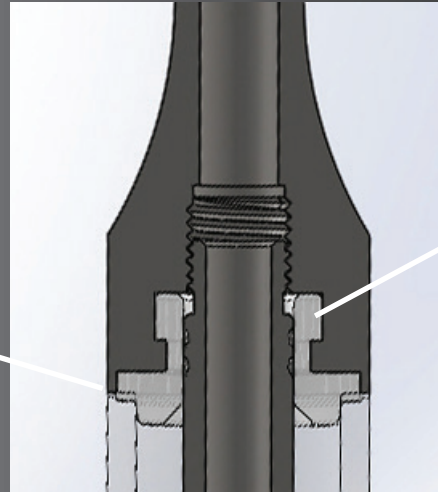


Removal of center post o-rings to ease cartridge filling, loss of o-rings when handling and possibility of pinching or displacing an o-ring when capping. Additionally Vaporous utilizes a stainless steel center post that removes the chance of heavy metals contamination

- Patent Pending *Total Mouthpiece Seal* provides multiple sealing points and eliminates o-rings to ease filling.
- Eliminates the use of center post o-rings to provide a larger filling area while removing the problem of displaced o-rings.
- Two points of sealing on every point of contact providing a perfect seal to keep your product where it should be. In the cartridge and not out.



Glass sealing 2 points on the top of the glass and inside of glass



2 Points of sealing on the center post

SILVER CARTRIDGE

- The all new Silver Tank uses our wickless design combined with our Cool Draw Technology for maximum flavor and performance
- Vaporous cartridges are engineered to outperform the competition in both flavor and airflow producing the purest taste and largest clouds.
- Food and medical-grade material construction.
- Glass & Stainless Steel holding tank eliminates the possibility of heavy metals contamination.
- Patent Pending ***Total Mouthpiece Seal*** provides multiple sealing points and eliminates o-rings to ease filling.

Standard Specifications:

Volume: 0.5ml & 1.0ml

Aperture: 0.8mm, 1.2mm & 2.0mm

Mouthpiece Materials: Metal, Ceramic & Wood

Mouthpiece Shapes: Flat & Round

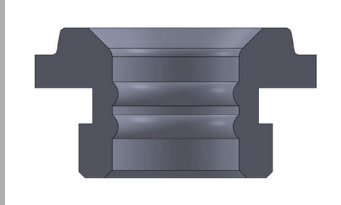
Finishes: Silver, Gold & Black Chrome

510 Thread

Full Branding & Customization Available



Patent pending *Total Mouthpiece Seal* has 2 sealing points on both the glass and center post creating a perfect seal while making it easier to fill



Glass provides a clean, corrosion resistant, hygienic outer housing for your product



Stainless steel center post removes the chance of heavy metals contamination

Cool Draw Technology to produce the largest clouds, cleanest taste and superior airflow

GEM CARTRIDGE

- The all new GEM Tank uses our wickless design combined with our Cool Draw Technology for maximum flavor and performance
- Food and medical-grade material construction.
- Glass & Stainless Steel holding tank eliminates the possibility of heavy metals contamination.
- Patent Pending *Total Mouthpiece Seal* provides multiple sealing points and eliminates o-rings to ease filling.
- Patented *Energized 1-Way Anti Leak Valve* provides a leak proof cartridge for your ease of mind (Patent #10,219,541).

Standard Specifications:

Volume: 0.5ml & 1.0ml

Aperture: 0.8mm, 1.2mm & 2.0mm

Mouthpiece Materials: Metal, Ceramic & Wood

Mouthpiece Shapes: Flat & Round

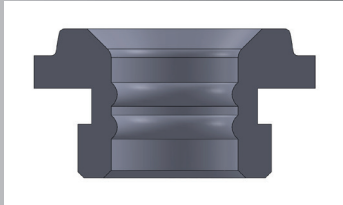
Finishes: Silver, Gold & Black Chrome

510 Thread

Full Branding & Customization Available



Patent pending *Total Mouthpiece Seal* has 2 sealing points on both the glass and center post creating a perfect seal while making it easier to fill



Japanese organic cotton for a clean superior wicking material

Glass provides a clean, corrosion resistant, hygienic outer housing for your product



Stainless steel center post removes the chance of heavy metals contamination

Cool Draw Technology to produce the largest clouds, cleanest taste and superior airflow

Patented *Energized 1-Way Anti Leak Valve* provides a leak proof cartridge for your ease of mind (Patent #10,219,541)

DIAMOND CARTRIDGE

- The Diamond Tank uses our wickless design combined with our Cool Draw Technology for maximum flavor and performance
- Food and medical-grade material construction.
- Glass & Stainless Steel holding tank eliminates the possibility of heavy metals contamination.
- Patent Pending *Total Mouthpiece Seal* provides multiple sealing points and eliminates o-rings to ease filling.
- Patented *Top Flow/Reverse Flow Technology ensures that there is never any leaking, keeping you product right where it should be* (Patent #10,188,145 B2).

Standard Specifications:

Volume: 0.5ml & 1.0ml

Aperture: 0.8mm, 1.2mm & 2.0mm

Mouthpiece Materials: Metal & Wood

Mouthpiece Shapes: Flat & Round

Finishes: Silver, Gold & Black Chrome

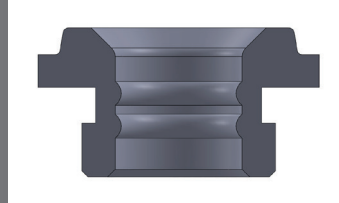
510 Thread

Full Branding & Customization Available



Patent pending *Total Mouthpiece Seal* has 2 sealing points on both the glass and center post creating a perfect seal while making it easier to fill

Patented top flow/reverse
flow technology delivers the
ultimate in power, creating
an unparalleled customer
experience



Japanese organic
cotton for a clean
superior wicking
material



Glass provides a clean, corrosion resistant, hygienic outer housing for your product

Stainless steel center post removes
the chance of heavy metals
contamination

Cool Draw Technology
to produce the largest
clouds, cleanest taste
and superior airflow

ASSASSIN CARTRIDGE

- The all new Assassin Tank is the most powerful and high flowing vapor tank we produce.
- Utilizes our Cool Draw technology for maximum flavor and ultimate performance
- Food and medical-grade material construction.
- Glass & Stainless Steel holding tank eliminates the possibility of heavy metals contamination.
- Patent Pending ***Total Mouthpiece Seal*** provides multiple sealing points and eliminates o-rings to ease filling.

Standard Specifications:

Volume: 0.5ml & 1.0ml

Aperture: 0.8mm, 1.2mm & 2.0mm

Mouthpiece Materials: Metal & Wood

Mouthpiece Shapes: Flat & Round

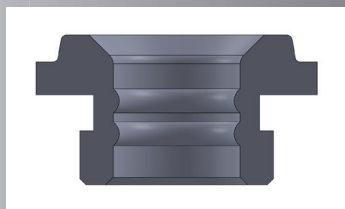
Finishes: Silver, Gold & Black Chrome

510 Thread

Full Branding & Customization Available

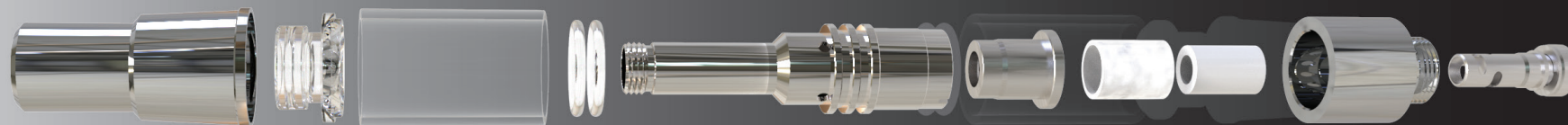


Patent pending *Total Mouthpiece Seal* has 2 sealing points on both the glass and center post creating a perfect seal while making it easier to fill



Japanese organic cotton for a clean superior wicking material

Cool Draw Technology to produce the largest clouds, cleanest taste and superior airflow



Glass provides a clean, corrosion resistant, hygienic outer housing for your product

Stainless steel center post removes the chance of heavy metals contamination

BATTERIES

- The Vaporous 11mm battery is designed to be a high flow performance battery with unmatched reliability
- It uses our proprietary airflow technology with an “A” grade high power battery cell to make this the most high performance reliable battery in its category
- 11mm & 14mm utilizes a bottom micro USB charging port
- Proprietary spring pin that provides a perfect connection to any cartridge while eliminating warranty issues from a poor connection in wiring.

Standard Specifications:

Sizes: 10mm, 11mm & 14mm

Voltage: Variable 3.2, 3.7 & 4.2 volts

Session mode: 10 second variable voltage

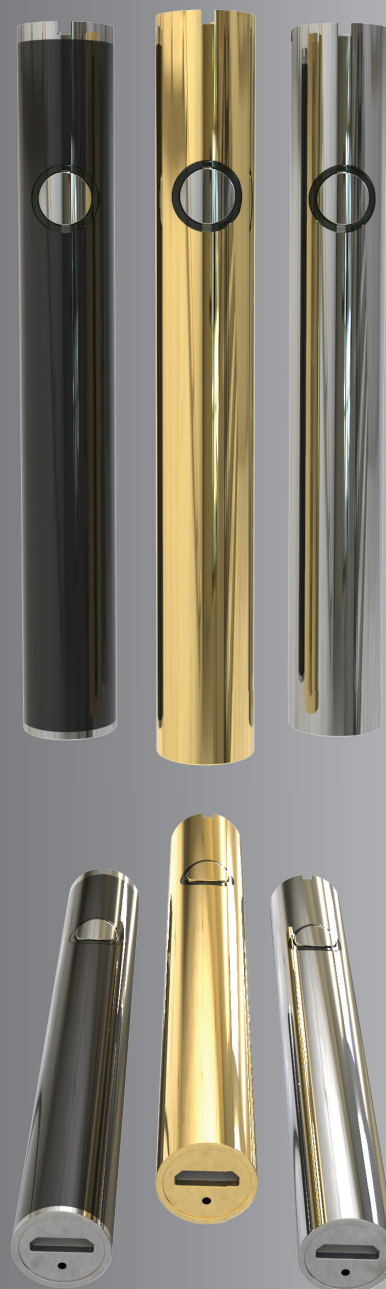
Cartridge Impedance: Sub ohm compatibility

Connection: 510 thread

Battery Cell: “A” grade high power cell

Finishes: Silver, Gold & Black Chrome

Full Branding & Customization Available



POD SYSTEM



- The all new POD System uses our wickless design combined with our Cool Cell Technology for maximum flavor and performance
- The center post is made entirely of 304 stainless steel with bottom fill and plug which makes this tank the cleanest and easiest to fill in its category
- The new cool cell technology increases vapor production while decreasing vapor temperature. This makes it smoother and easier to draw and much cooler on the throat thus resulting in an effortless vaping experience.

Standard Specifications:

Wickless design
Cool Cell Technology
Patented anti-leak system (patent number: US 10,244,792 B2 and US 9,750,284 B2)
Stainless steel tank internals with polycarbonate housing
100% PFC free
Draw activation with haptic feedback battery
Micro USB Charging

Full Branding & Customization Available

VAPOROUS

2170 W 190TH STREET, TORRANCE, CA 90504

P: (310) 961-9426

SALES@VAPOROUS.COM

VAPOROUS.COM